

RS-485 Connection

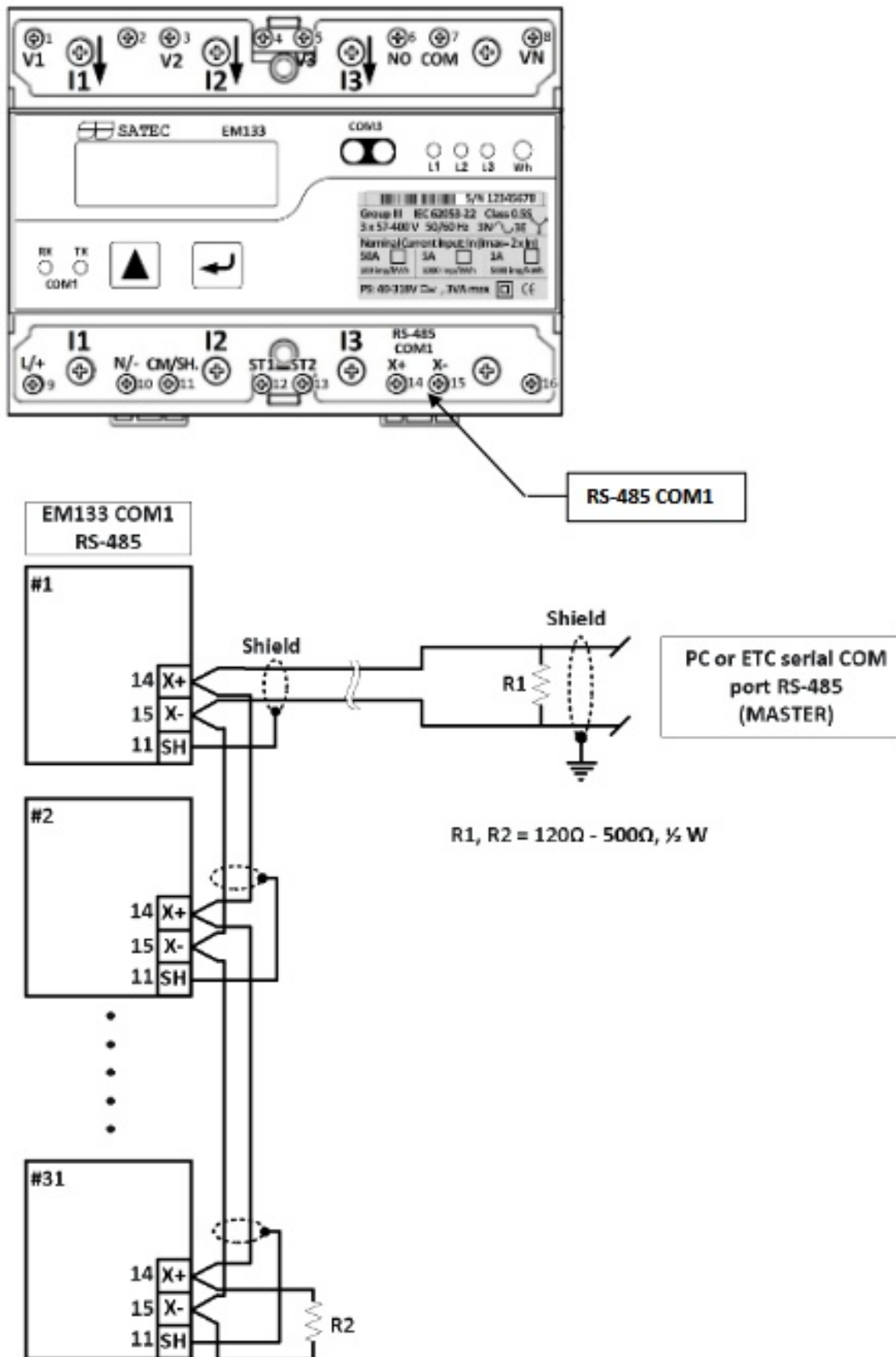


Figure 2-19 COM1 RS-485 2-Wire Connection

Communication cable Specification: Shielded, #22AWG.

Note: pay attention to GND connection (SH->GND).

Table 3: Wiring Configurations

Wiring Configuration	Setup Code	Figure
3-wire 2-element Delta direct connection using 2 CTs	3dir2	2-12
4-wire 3-element Wye direct connection using 3 CTs	4Ln3 or 4LL3	2-13
4-wire 3-element Wye connection using 3 PTs, 3 CTs	4Ln3 or 4LL3	2-14
3-wire 2-element Open Delta connection using 2 PTs, 2 CTs	3OP2	2-15
4-wire 2½-element Wye connection using 2 PTs, 3 CTs	3Ln3 or 3LL3	2-16
3-wire 2½-element Open Delta connection using 2 PTs, 3 CTs	3OP3	2-17
4-wire 3-element Delta direct connection using 3 CTs	4Ln3 or 4LL3	2-18
3-wire 2½-element Broken Delta connection using 2 PTs, 3 CTs	3bLn3 or 3bLL3	2-19

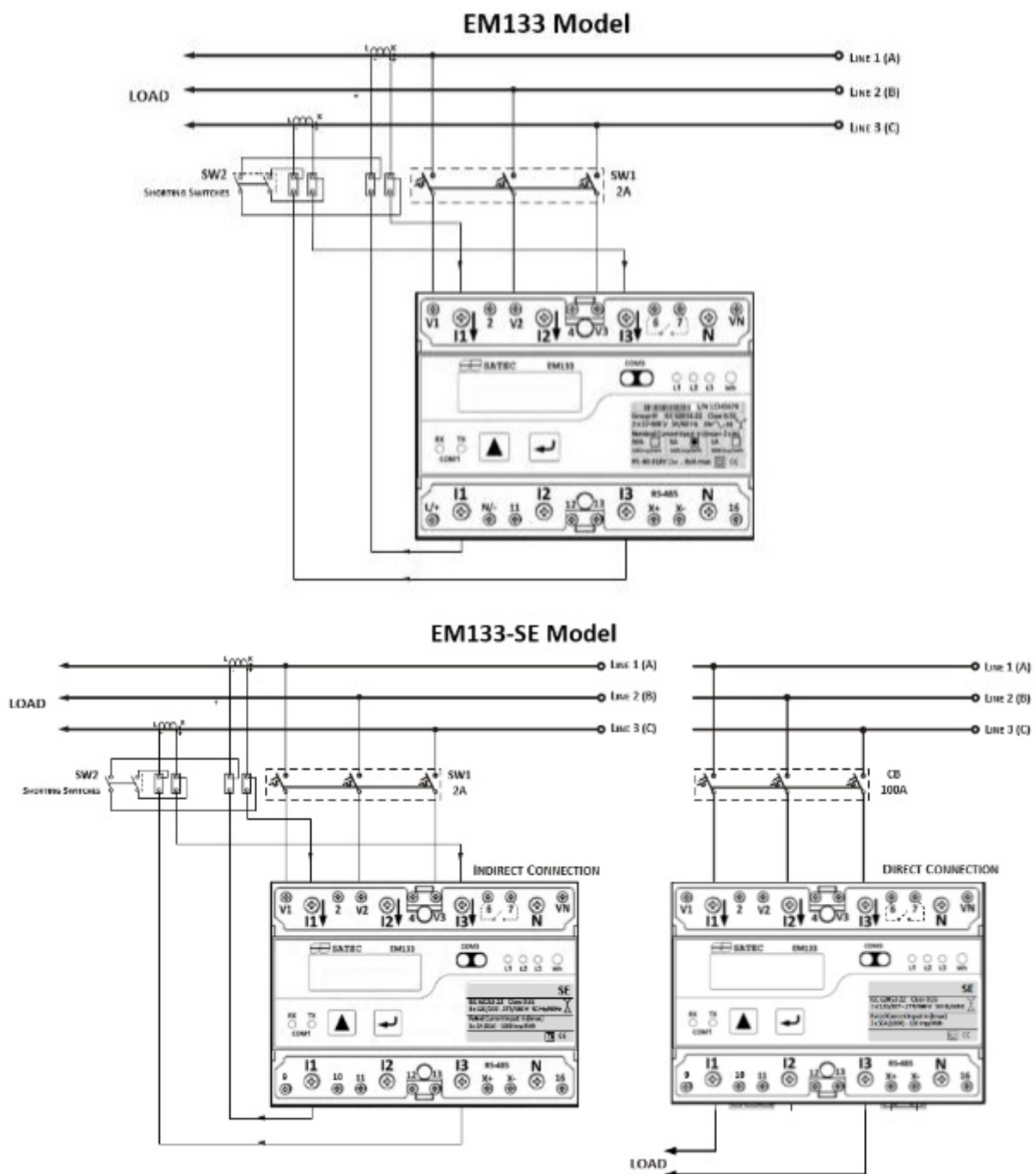
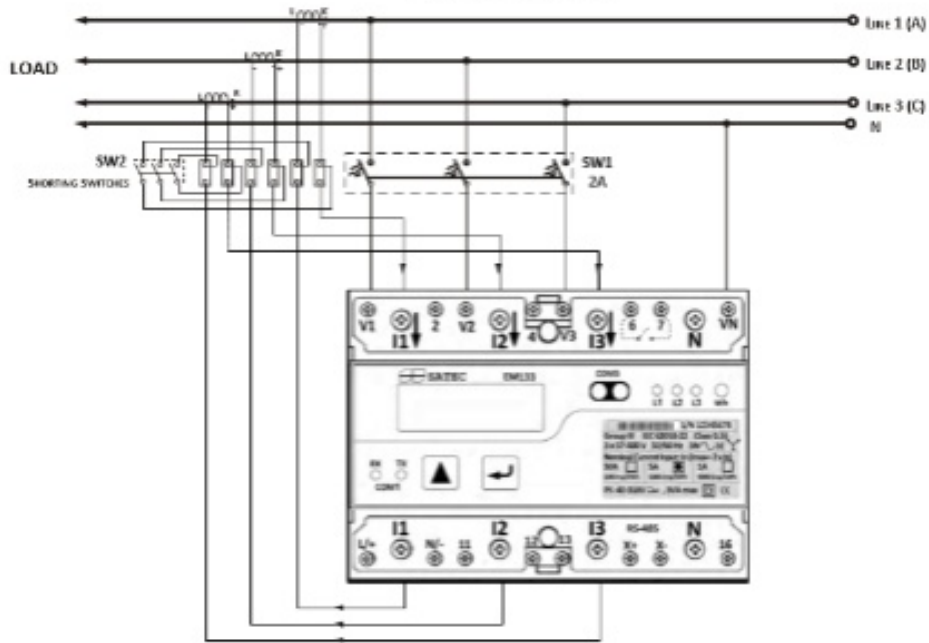


Figure 2-12 3-Wire 2-Element Delta Direct Connection Using 2 CTs (Wiring Mode = 3dir2)

EM133 Model



EM133-SE Model

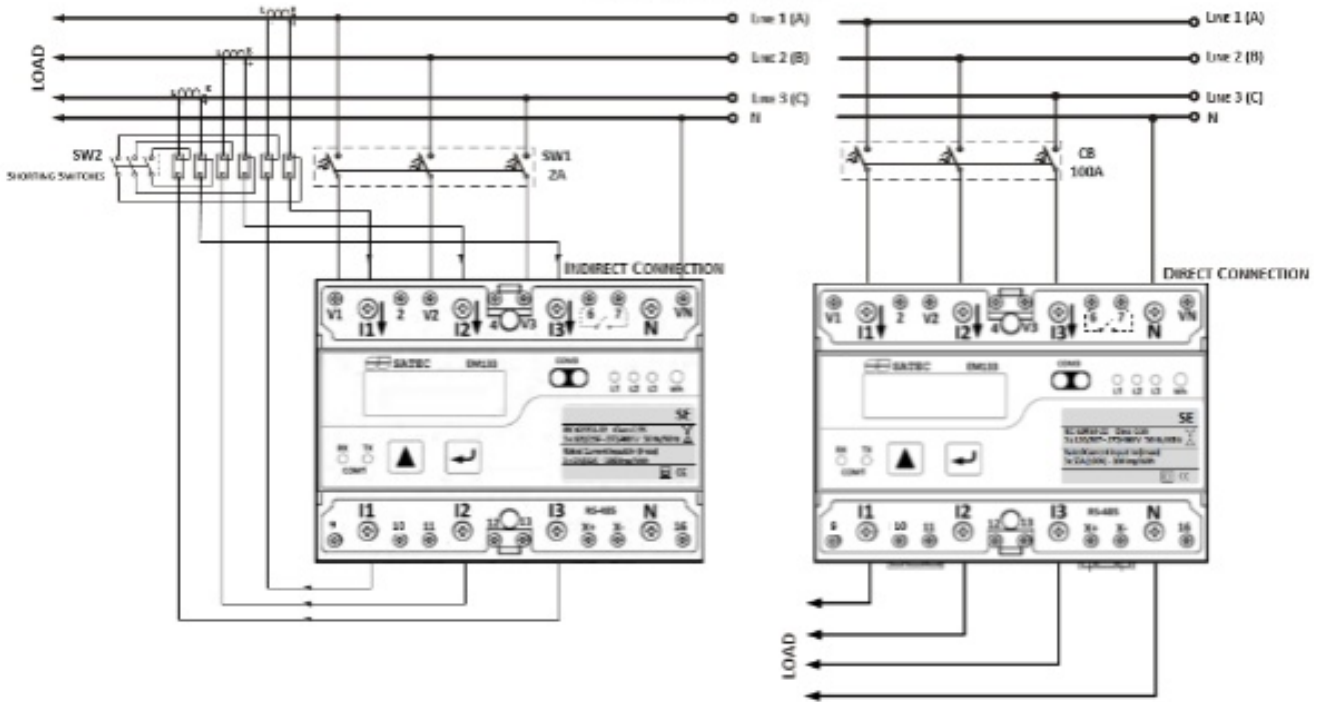


Figure 2-13 4-Wire Wye 3-Element Direct Connection Using 3 CTs (Wiring Mode = 4LL3 or 4Ln3)

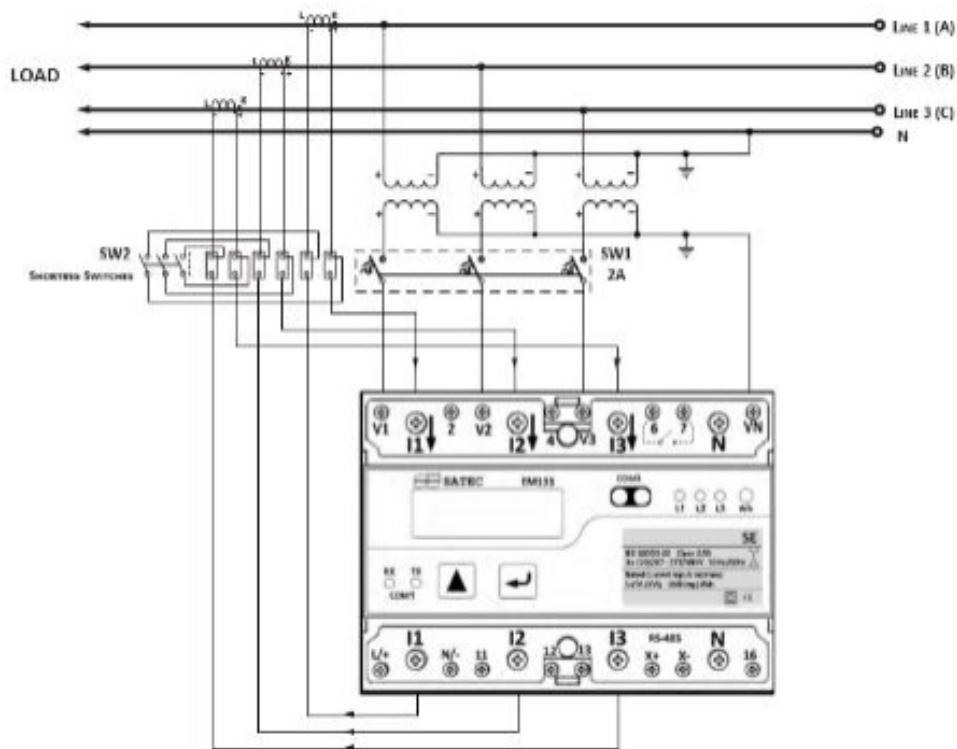


Figure 2-14 4-Wire Wye 3-Element Connection Using 3 PTs, 3 CTs (Wiring Mode = 4LL3 or 4Ln3)

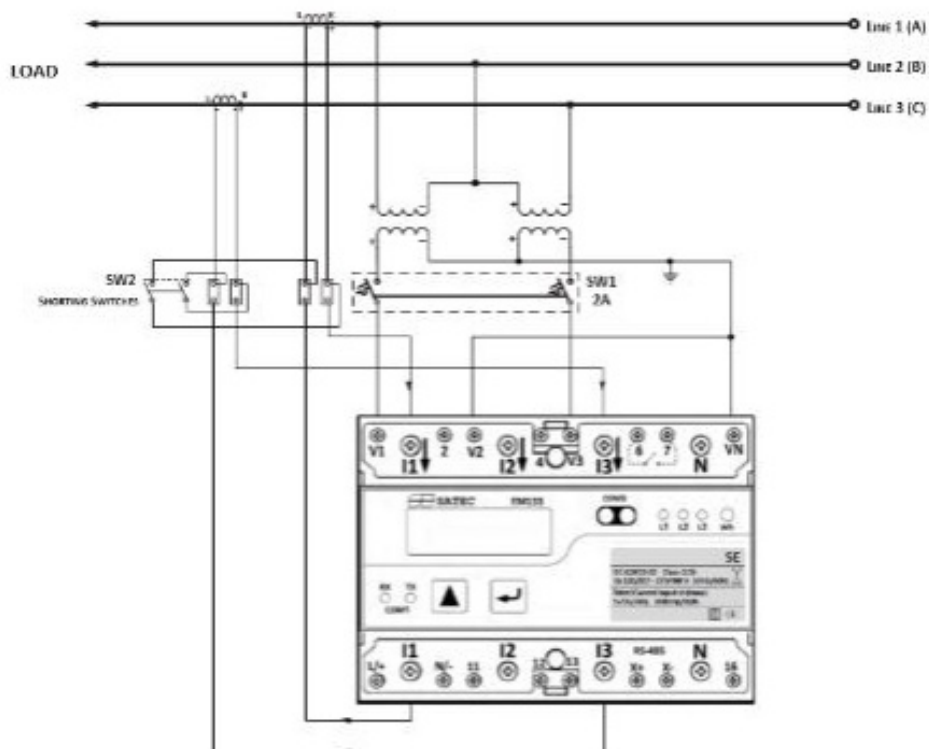


Figure 2-15a 3-Wire 2-Element Open Delta Connection Using 2 PTs, 2 CTs (Wiring Mode = 3OP2)

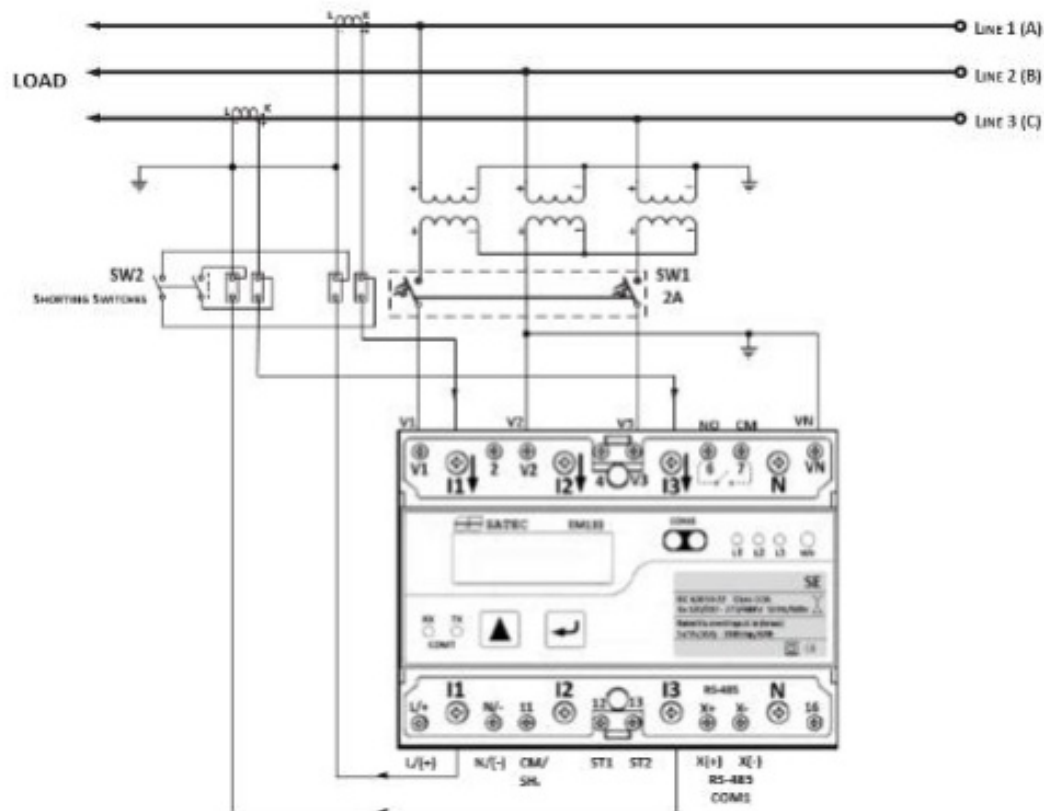
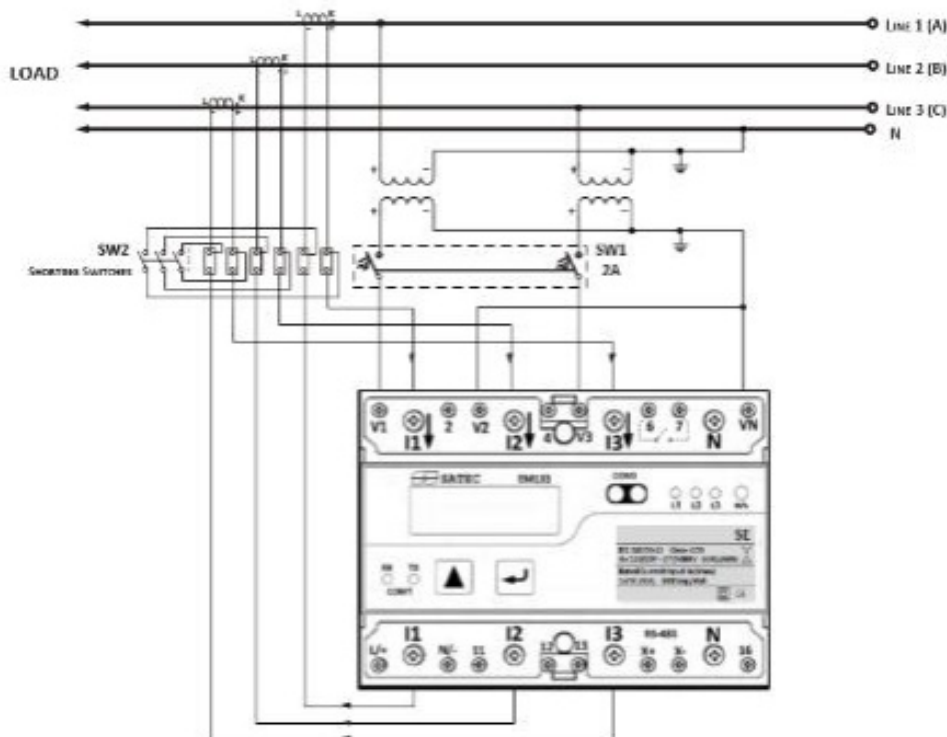


Figure 2-15b 3-Wire 2-Element Open Delta Connection Using 3 PTs, 2 CTs (Wiring Mode = 3OP2)



This configuration provides accurate power measurements only if the voltages are balanced.

Figure 2-16 4-Wire Wye 2 1/2-Element Connection Using 2 PTs, 3 CTs (Wiring Mode = 3LL3 or 3Ln3)

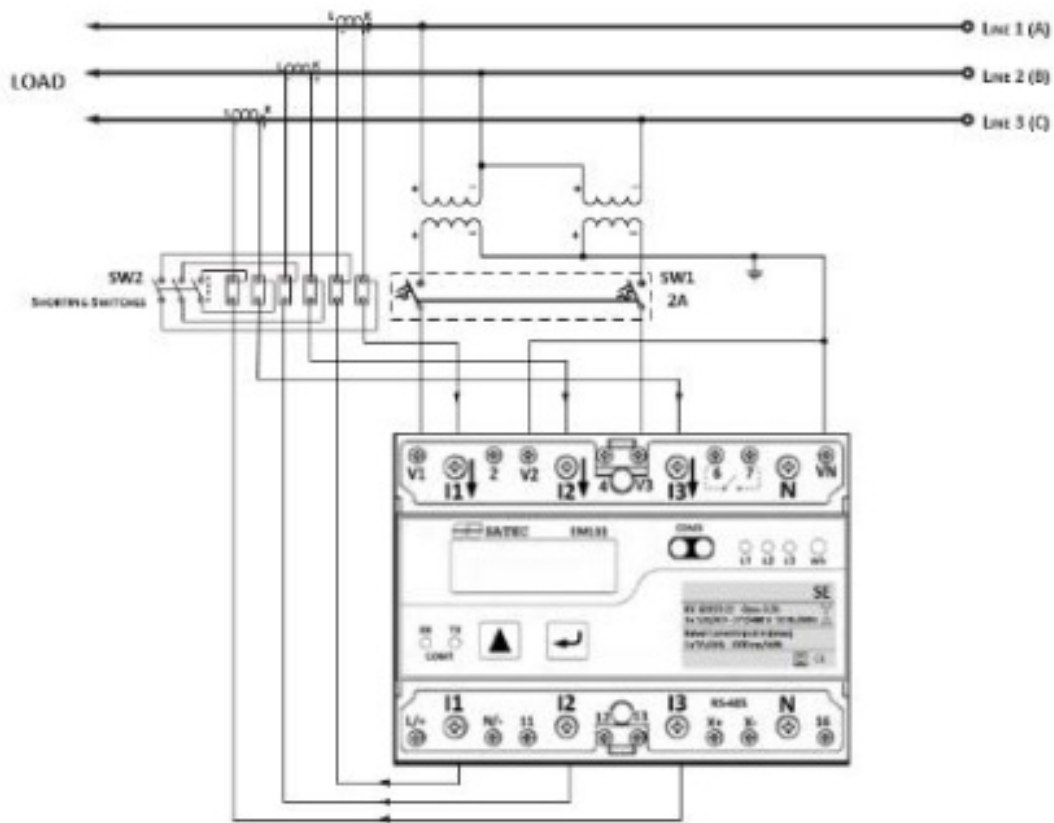


Figure 2-17 3-Wire 2 1/2-Element Open Delta Connection Using 2 PTs, 3 CTs (Wiring Mode = 30P3)

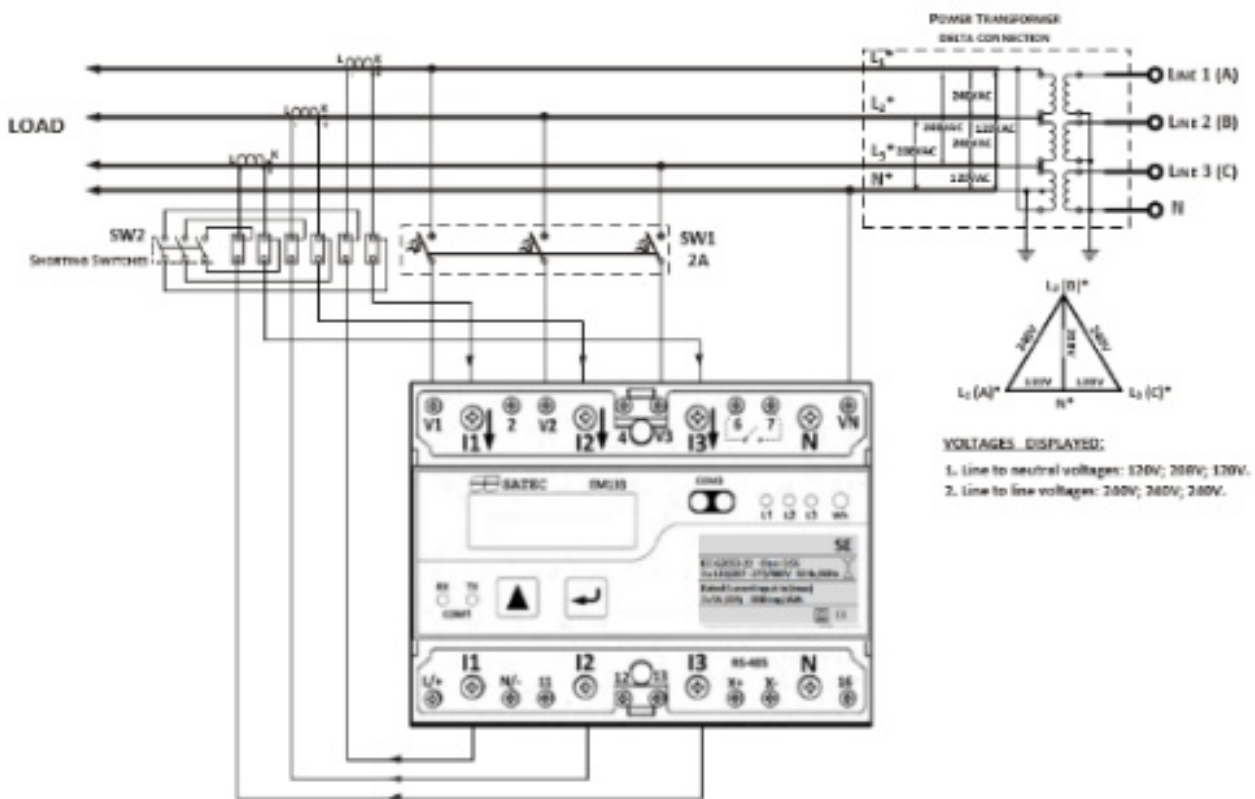


Figure 2-18 4-Wire 3-Element Delta Direct Connection Using 3 CTs (Wiring Mode = 4LL3 or 4Ln3)

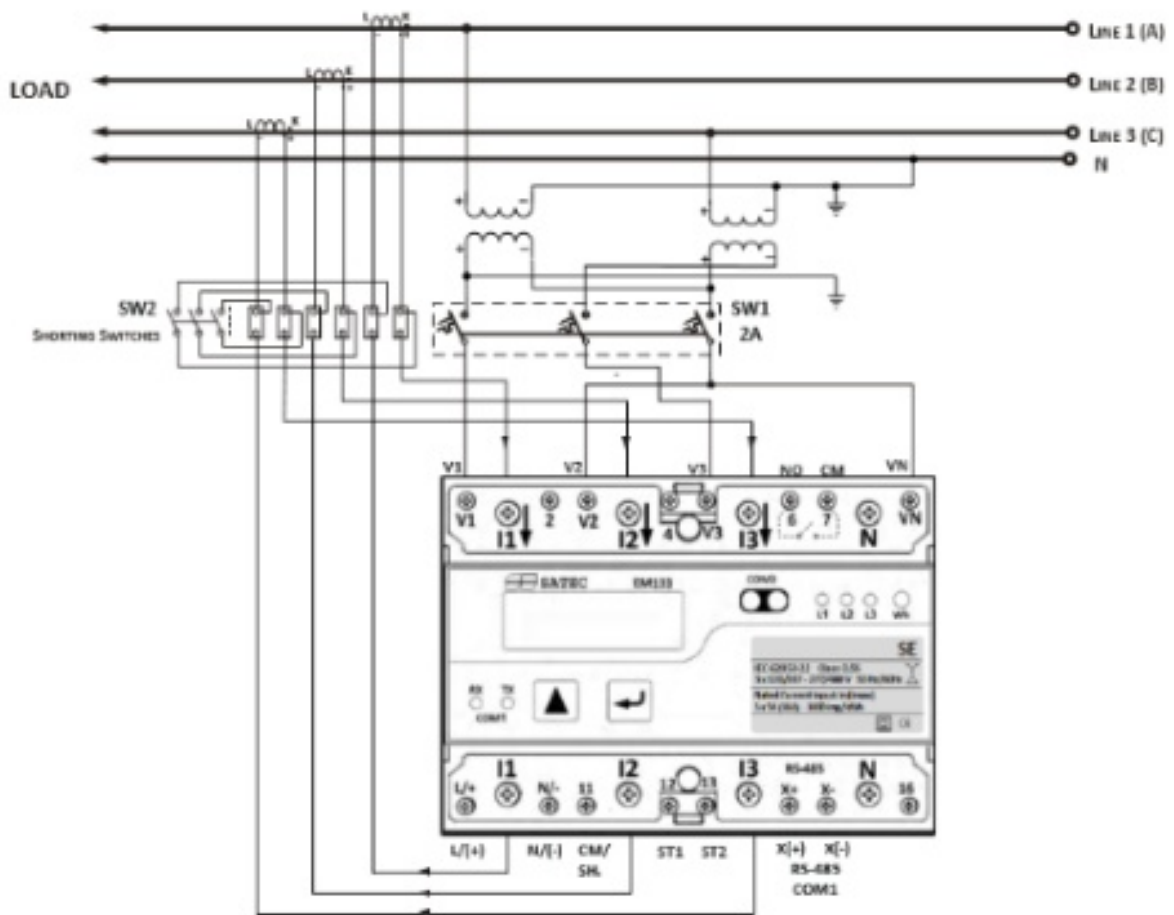


Figure 2-19 3-Wire 2½-Element Broken Delta Connection Using 2 PTs, 3 CTs (Wiring Mode = 3bLn3 or 3bLL3)